

NAVIGATION AND ECOSYSTEM SUSTAINABILITY PROGRAM (NESP)

Illinois Waterway Ports
31 August 2023

Andrew Goodall, P.E., PMP
NESP Regional Program
Manager
USACE Rock Island District



U.S. ARMY



US Army Corps
of Engineers®

PARTNER/STAKEHOLDER COORDINATION

NESP Coordinating Committee Meeting

- Scheduled for 9 November in the Quad Cities.

Groundbreaking/Ribbon Cutting Events

- A groundbreaking event was held at the Lock 14 mooring cell project on 12 April 2023.
- Groundbreaking events were held on 18 May 2023 at Lock and Dam 22 and Lock and Dam 25 for the fish passage and new lock projects respectively.
- A ribbon cutting event was held at the Pool 2 project on 25 July 2023.



U.S. ARMY



US Army Corps
of Engineers®

ECOSYSTEM

3

Lock and Dam 22 Fish Passage

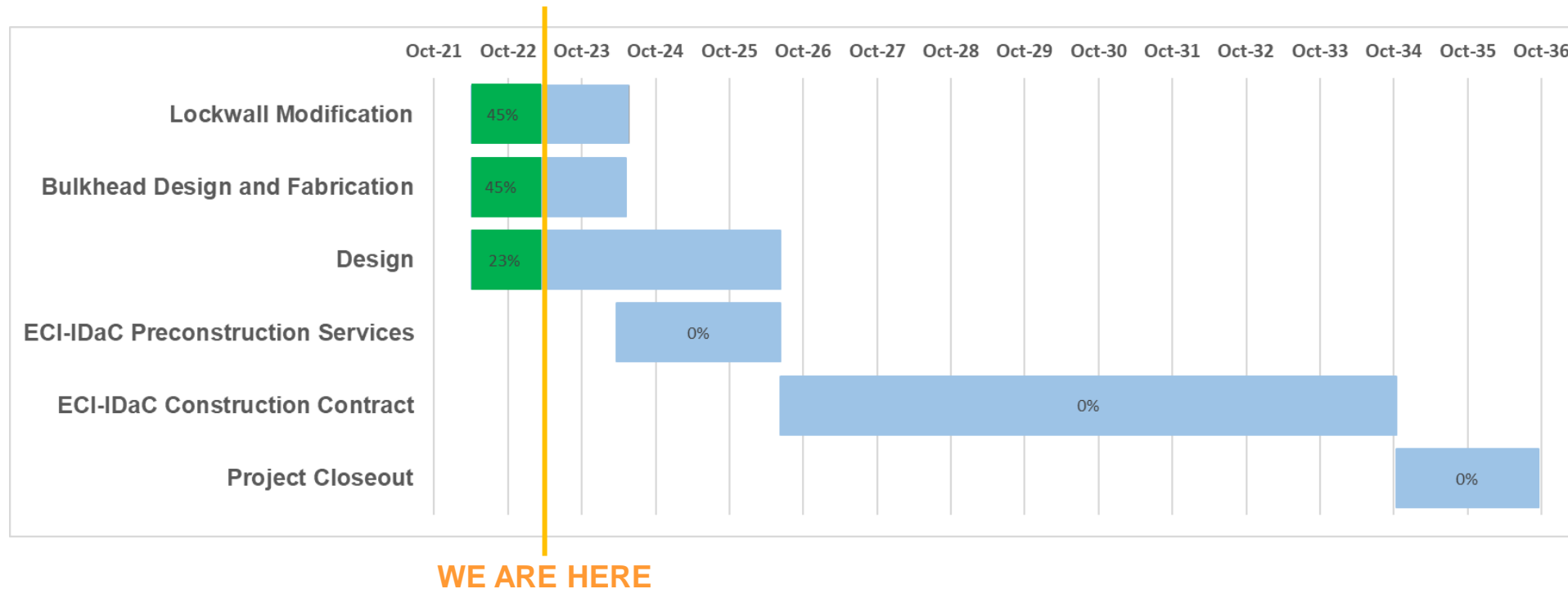
- Pre-project fish monitoring activities ongoing.
- 65% design deliverable under review. Project on schedule for construction contract award in FY24.

FY23 Funding (\$18.379M)

- Ecosystem additional project development (\$5M)
 - Partner Funding
 - Programmatic Priorities – Adaptive Management Implementation Plan, Systemic Forest Management, Project Implementation Report process, and Communication Plan.
- Project Implementation (\$4.5M)
 - Continuation of projects initiated in FY22.
- Fish Passage Construction and Monitoring (\$4.379M)
- Project Implementation Report Data Collection (\$4.5M)

Lock 25 New 1200' Lock

- Design and solicitation activities ongoing.



Upcoming scheduled items:

- Early Contractor Involvement-Integrated Design and Construction (ECI-IDaC) Preconstruction Services Award in March 2024
- ECI-IDaC Construction Option Award in June 2026
- ECI-IDaC Construction Complete in October 2034

LaGrange New 1200' Lock

- Physical modeling ongoing at Engineer Research Development Center to include industry coordination with the Illinois River Carriers Association, model testing of lock configurations, and ship simulation when the final configuration is ready.
- Fiscal year 2022 task order (5%-35%) ongoing tasks include:
 - Geotechnical investigations, lock design, hydraulic modeling, site surveys, cultural surveys, real estate documentation, and physical model updates.
 - Development of construction contract documents – supply contract and utility relocation/site development.
- Design task order development for 35%-100% design, tasks include: all project design features for final plans and specifications. On schedule for task order award in FY23.
- Acquisition strategy development. The initial construction contractor industry day was held on 12 July 2023.

Navigation

- Mooring cell (7) construction
- LaGrange initial construction contract

Ecosystem

- Lock and Dam 22 Fish Passage construction funding
- Continued project planning and design
- Partner funding
- Programmatic Activities



U.S. ARMY



US Army Corps of Engineers

NAVIGATION AND ECOSYSTEM SUSTAINABILITY PROGRAM (NESP)

ST. PAUL DISTRICT- ROCK ISLAND DISTRICT - ST. LOUIS DISTRICT

NAVIGATION AND ECOSYSTEM PROJECTS

The Navigation and Ecosystem Sustainability Program (NESP) is a long-term, dual-purpose program that integrates navigation improvements and ecosystem restoration together to provide Upper Mississippi River System once in a generation-type positive impacts.

The primary goals of the program are to increase the capacity and improve the reliability of the inland navigation system while restoring, protecting, and enhancing the environment.

This map only shows projects actively being implemented. NESP includes an additional 5 - 1200' locks, systemic mitigation, and hundreds of ecosystem restoration projects.

<p>CONSTRUCTION COMPLETE</p> <ul style="list-style-type: none"> 1 Pool 2 Wingdam Notching <p>ONGOING CONSTRUCTION</p> <ul style="list-style-type: none"> 2 Systemic Mitigation - Pool 4 Island 4 7 Lock 14 Mooring Cell 13 Moore's Towhead System Mitigation 20 Lock 25 New 1200' Lock 	<p>CONSTRUCTION / AE DESIGN SERVICE CONTRACT AWARDS IN FISCAL YEAR 2023</p> <ul style="list-style-type: none"> 8 Andalusia Island Complex 9 Starved Rock Breakwater 12 LaGrange New 1200' Lock Design 16 Alton Pools Islands - Island Protection and Side Channel Restoration 17 Twin Island Protection and Enhancement
<p>ONGOING DESIGN</p> <ul style="list-style-type: none"> 14 Lock and Dam 22 Fish Passage Mooring Facilities 	

ONGOING PROJECT PLANNING	
YEAR 1	YEAR 2
<ul style="list-style-type: none"> 4 Johnson Island 5 Sny Magill, Effigy Mounds National Monument 10 Lee County Islands and Backwaters 11 Liverpool Flowing Side Channel 18 Clarksville/Carroll Island Side Channel 19 Haugens Island Side Channel 21 MMR - NWR - Horse Island 	<ul style="list-style-type: none"> 3 Wacouta Bay Systemic Forest Management 6 Sabula Lakes 15 Pool 24 Island Restoration - Denmark and Drift Islands Complex 22 Middle Mississippi River Stone Dike Alterations Phase 1 Water Level Management - Reduce Water Level Fluctuations

NESP PARTNERS

