



UMRBA Navigation Program



UMRBA Background

- Governor-level interstate organization for multi-purpose management
- Governor-designated interstate WQ entity
- Facilitate dialogue, cooperative action, and coordination
 - Interstate forum
 - Cooperative planning, coordinated management
 - Information exchange
 - Regional positions, advocacy on states' behalf





*“Nationally Significant
Ecosystem
and
Nationally Significant
Navigation System”
– Congress, 1986*



- Lock modernization
- Channel reliability
- Integrated management
- M-35 development



UMRBA M-35 Route Priorities

Vision:

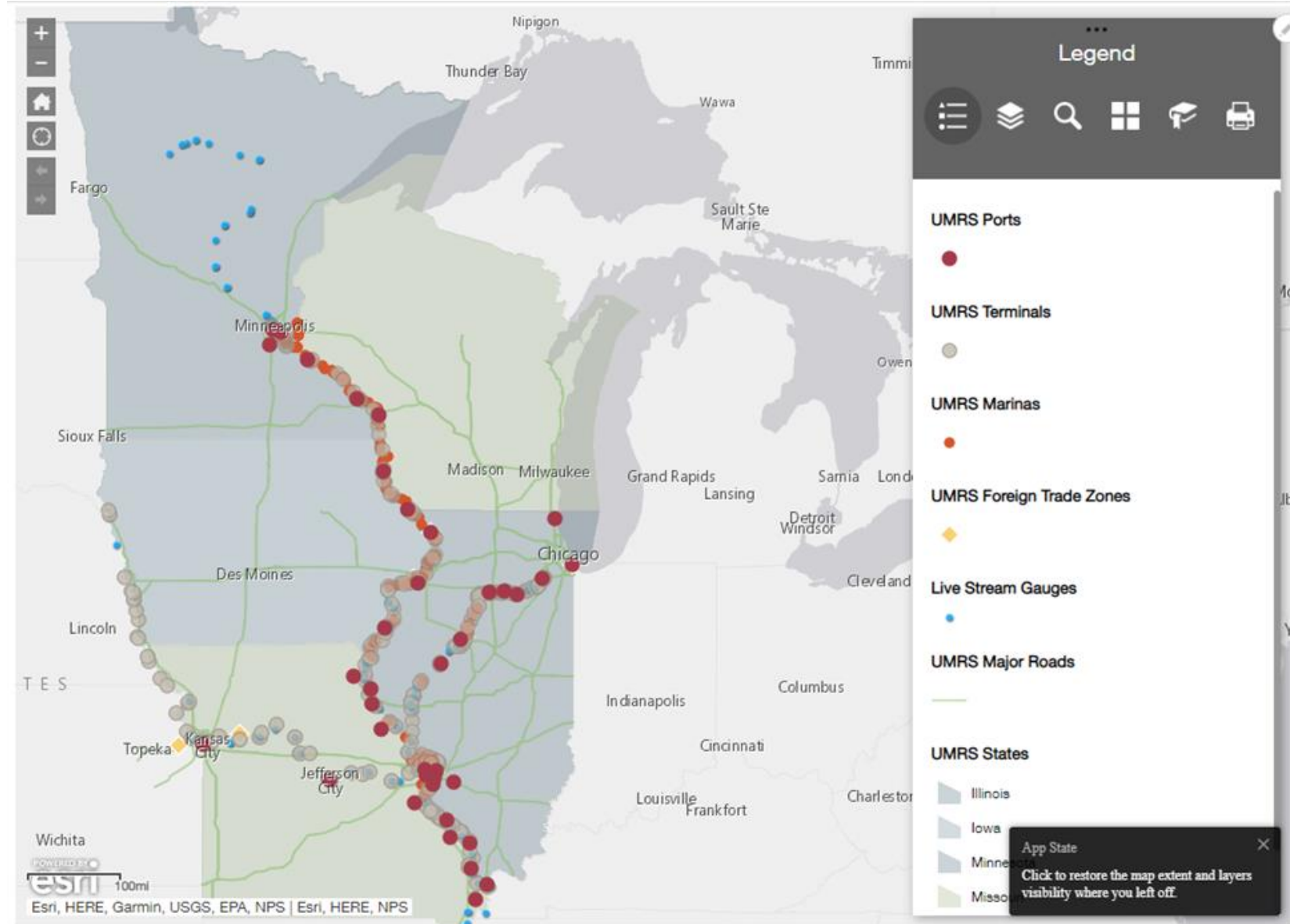
Modern, reliable, cost-effective transportation route

- Connects Midwest to global markets
- Integrates into national surface transportation system

UMRBA Navigation Assets Inventory

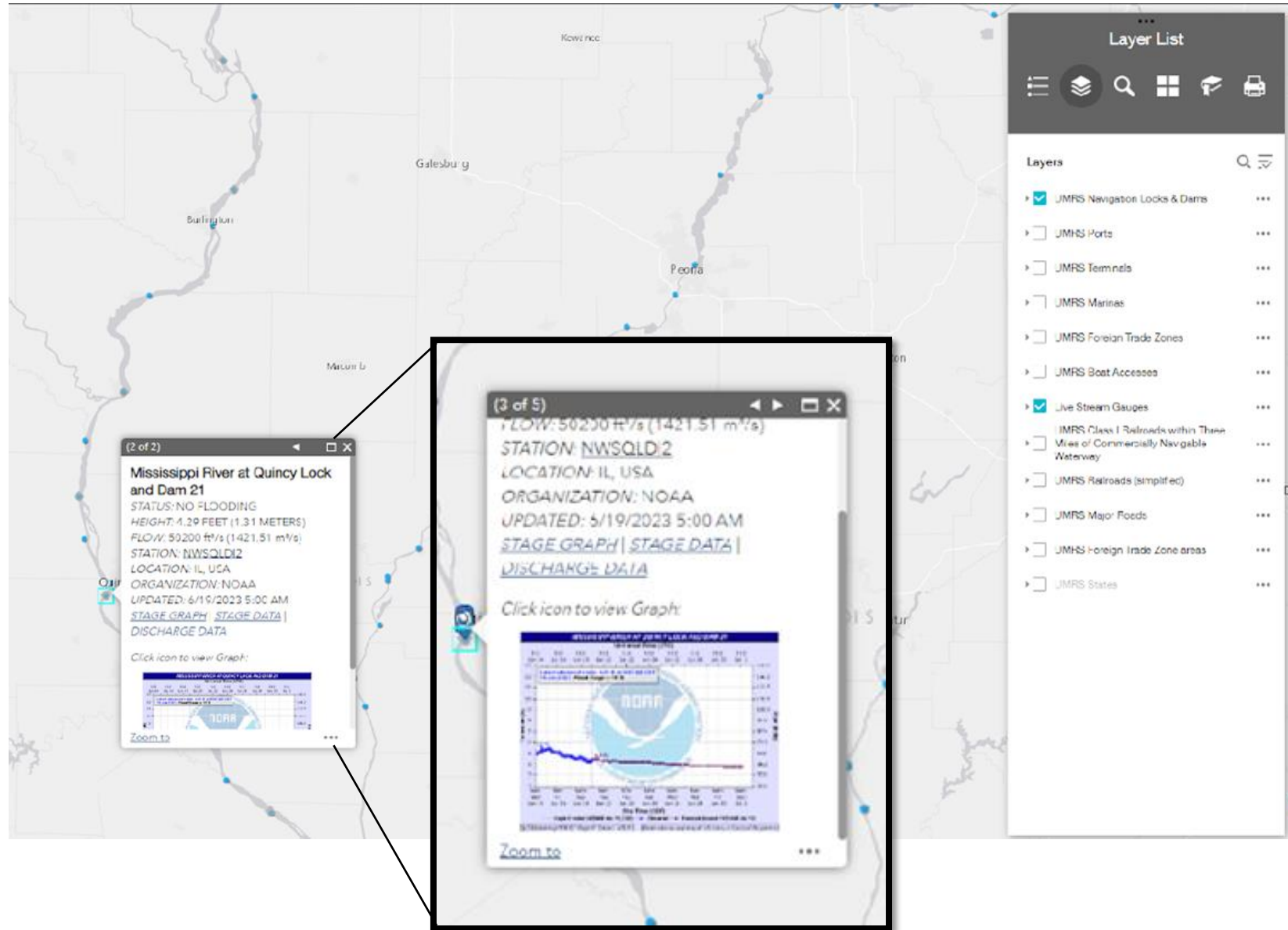
- Expanded to Missouri River
- Updated with Corps data

umrba.org/navigation-assets-inventory



UMRBA Navigation Assets Inventory – Streamgauge Information

umrba.org/navigation-assets-inventory

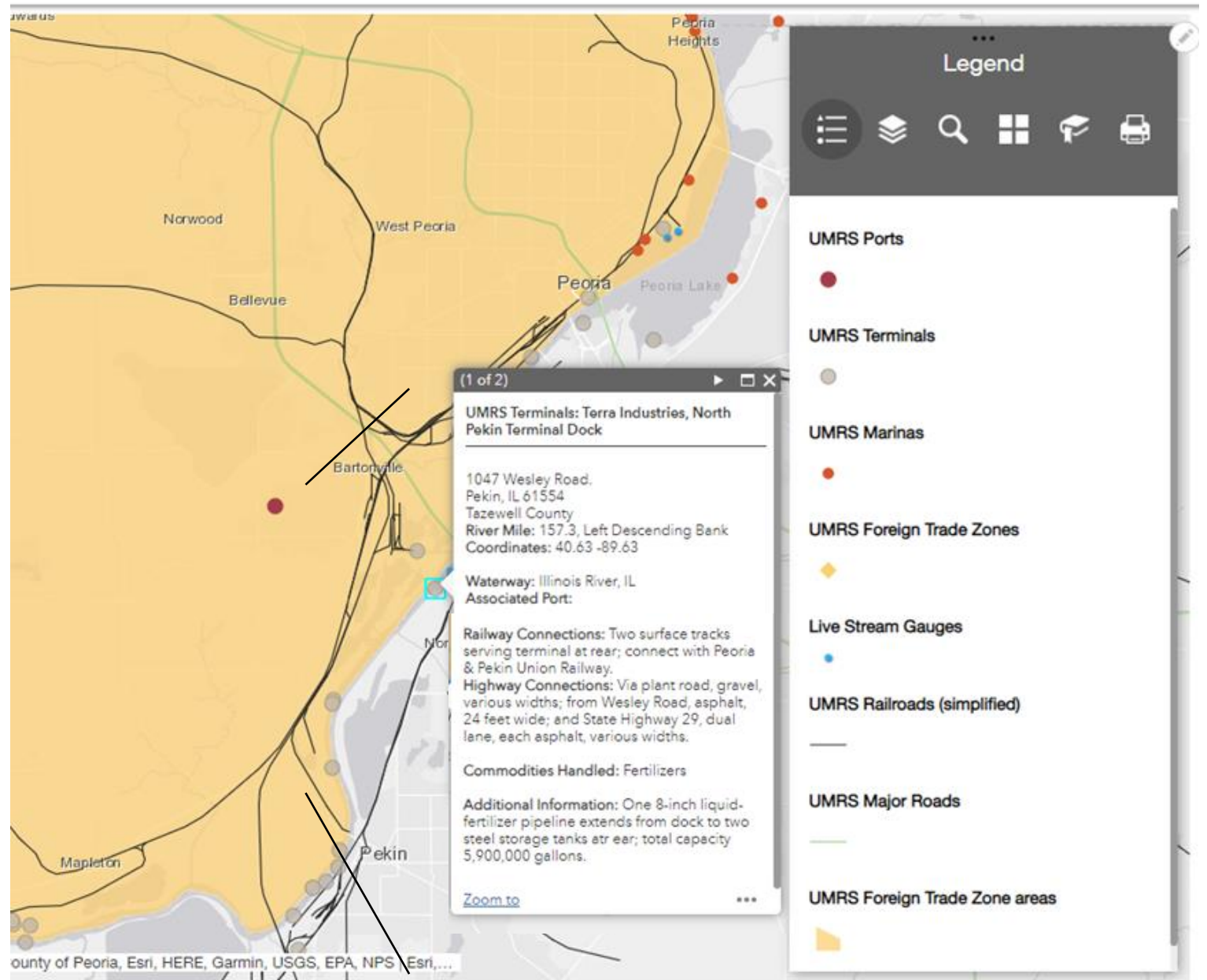


UMRBA

Navigation Assets Inventory

– Streamgauge Information

umrba.org/navigation-assets-inventory



ECONOMIC IMPACT OF ILLINOIS' INLAND WATERWAYS



IN 2018, ILLINOIS' PORTS, INLAND WATERWAYS, AND INLAND WATERWAYS-DEPENDENT INDUSTRIES SUPPORTED

Nearly **236,000 jobs**

\$15.5 billion in personal income

\$37.6 billion in Gross State Product

\$132.6 billion in total output

...Giving rise to **\$2.1 billion** in state & local tax revenue

Illinois has **1,100 MILES** of navigable inland waterways, ranking it **8th** in the nation

INLAND WATERWAYS SUPPORT ILLINOIS' KEY INDUSTRIES

Industry Sub-Category	Percent of Goods Shipped by Water (Tons)	Direct Illinois Jobs
Chemical manufacturing	↻ 6.6% of outbound	27,560
Plastics & rubber products mfg.	↻ 6.0% of inbound	26,150
Crop production	↻ 5.8% of outbound	1,900*
Nonmetallic mineral product mfg.	↻ 5.7% of outbound	8,870
Mining (except oil & gas)	↻ 4.7% of outbound	3,590

*Total for Agriculture, Forestry, Fishing, and Hunting sector (NAICS 1)

ILLINOIS' INLAND WATERWAY ASSETS AT A GLANCE

Mississippi, Ohio, and Illinois Rivers and Great Lakes System

17 public ports

TOP INLAND WATERWAYS COMMODITIES BY WEIGHT (comprising 70% of total tonnage)

Food & food products, such as fruits, vegetables, oils, & seeds **36.4 million tons**

Coal, lignite, and coal coke **13.6 million tons**

Petroleum products **8.3 million tons**

TOP INLAND WATERWAYS COMMODITIES BY VALUE (comprising 53% of total value)

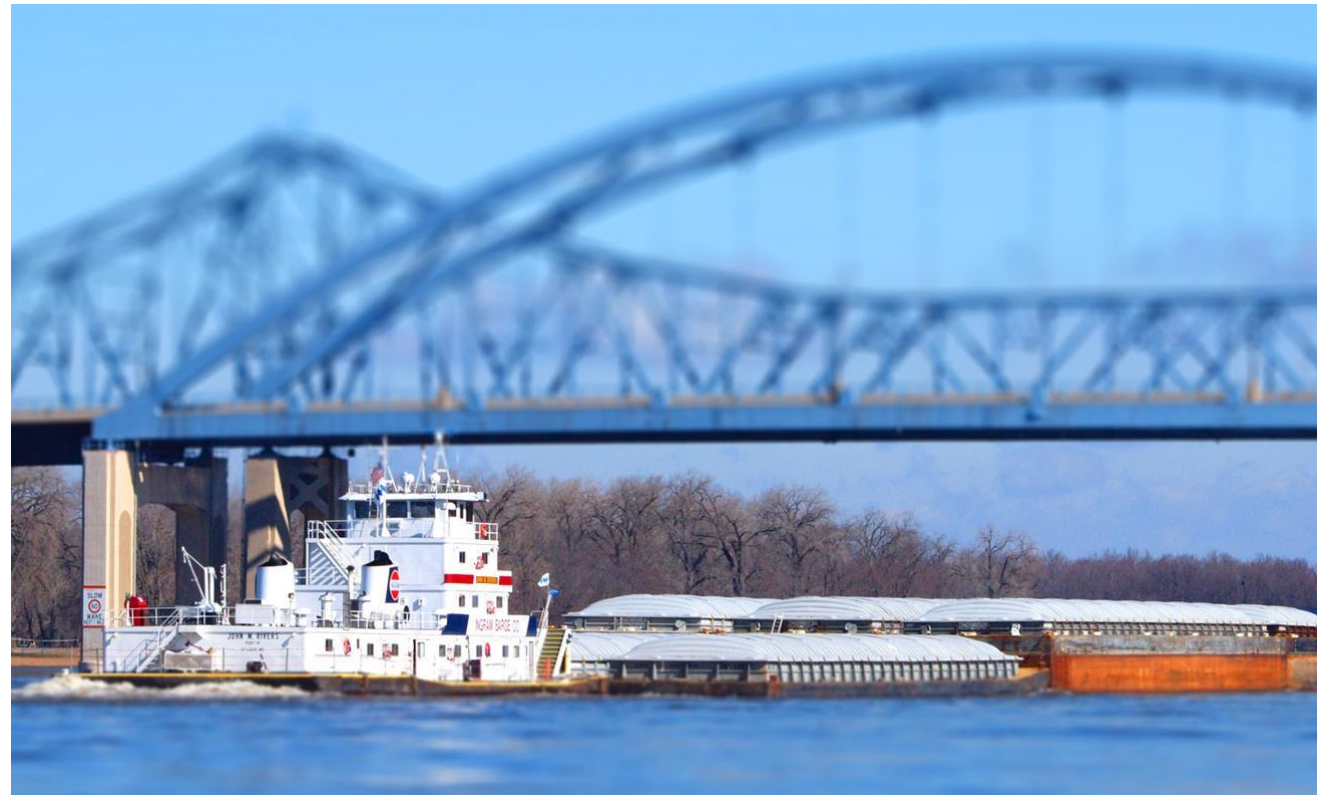
Agricultural products, such as fruits, vegetables, oils, & seeds **\$2.7 billion**

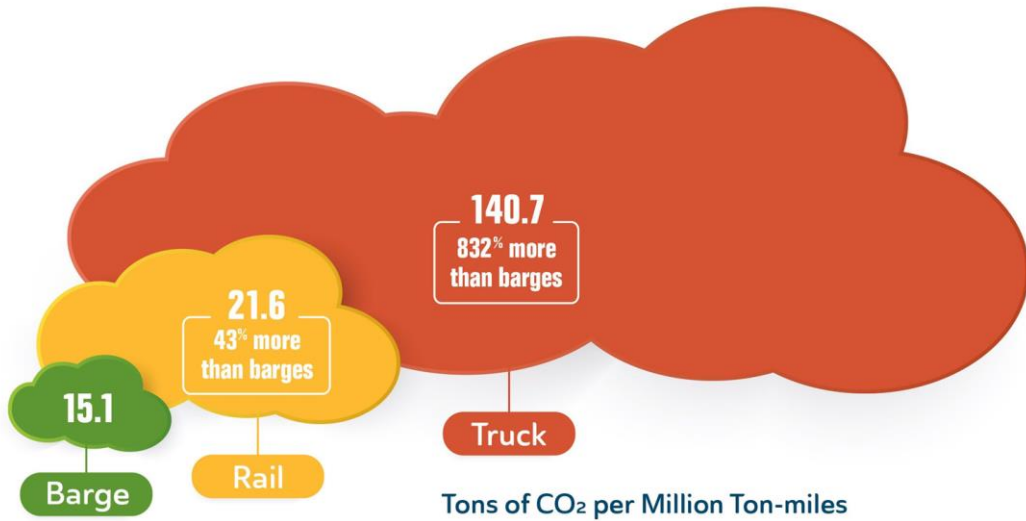
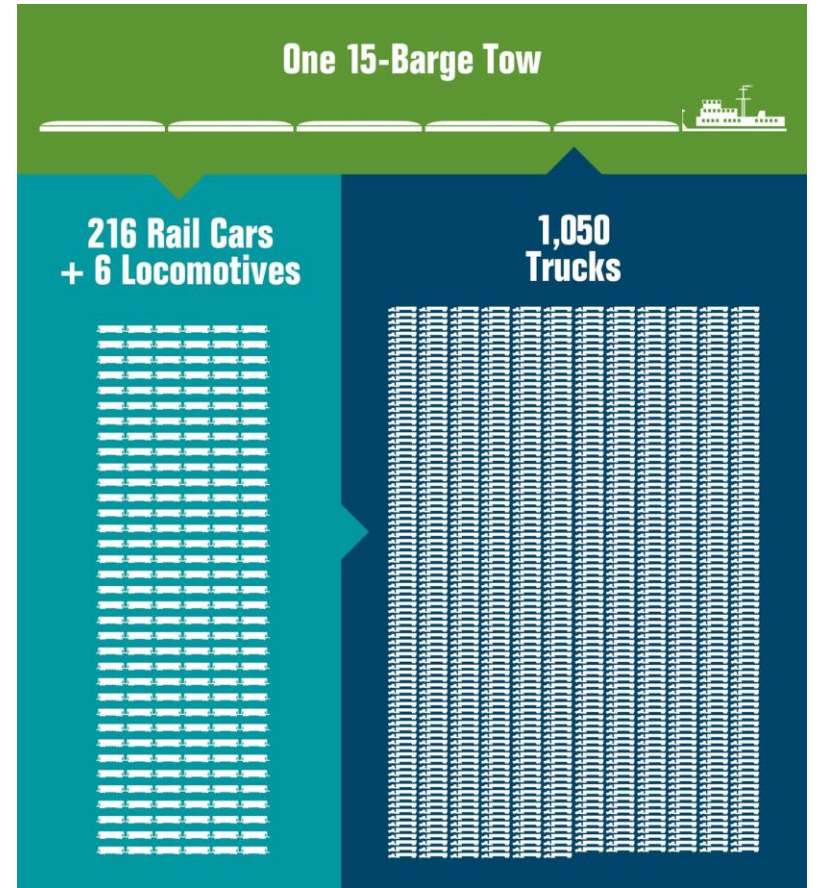
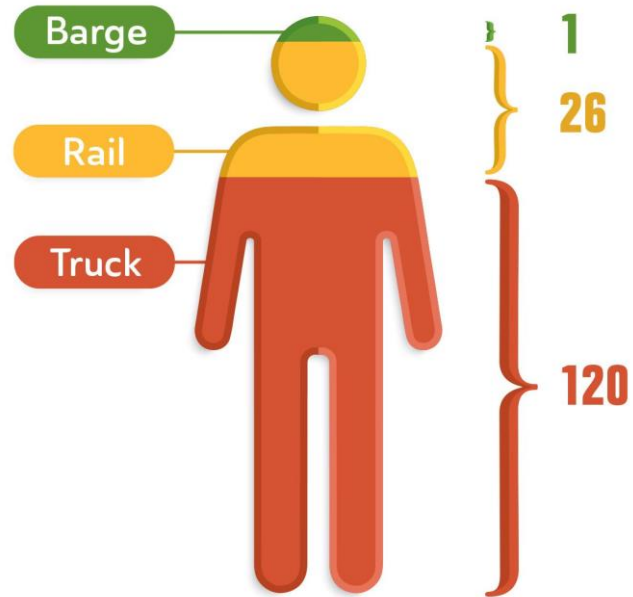
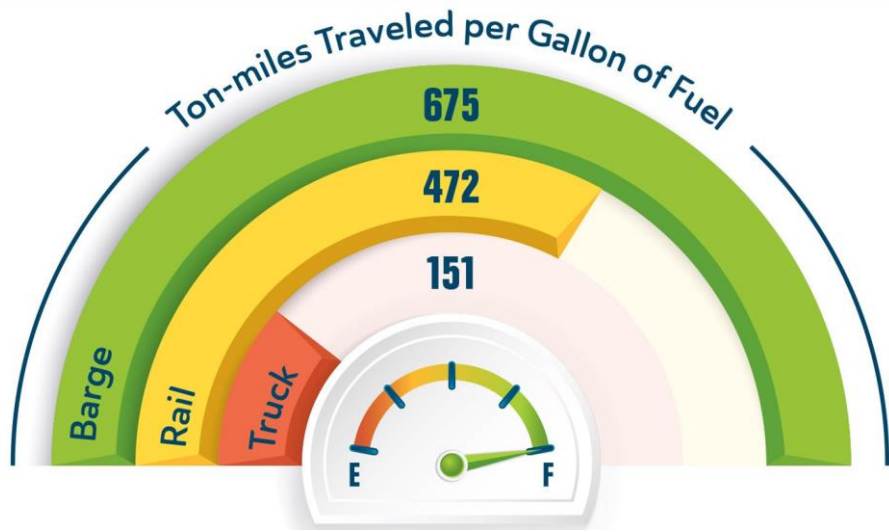
Basic chemicals used in consumer products, including appliances, toys, and cosmetics **\$2.5 billion**

Cereal grains, including those used in livestock feed, bakery, & dist **\$1.8 billion**

In 2018, **83.0M** tons of freight valued at **\$13.2 BILLION** moved on Illinois' inland waterways, which is equivalent to nearly **2.1 MILLION TRUCKS**

Avoided trucks translates into **reduced congestion, emissions, and crashes**, and contributes to the state of good repair of highway infrastructure





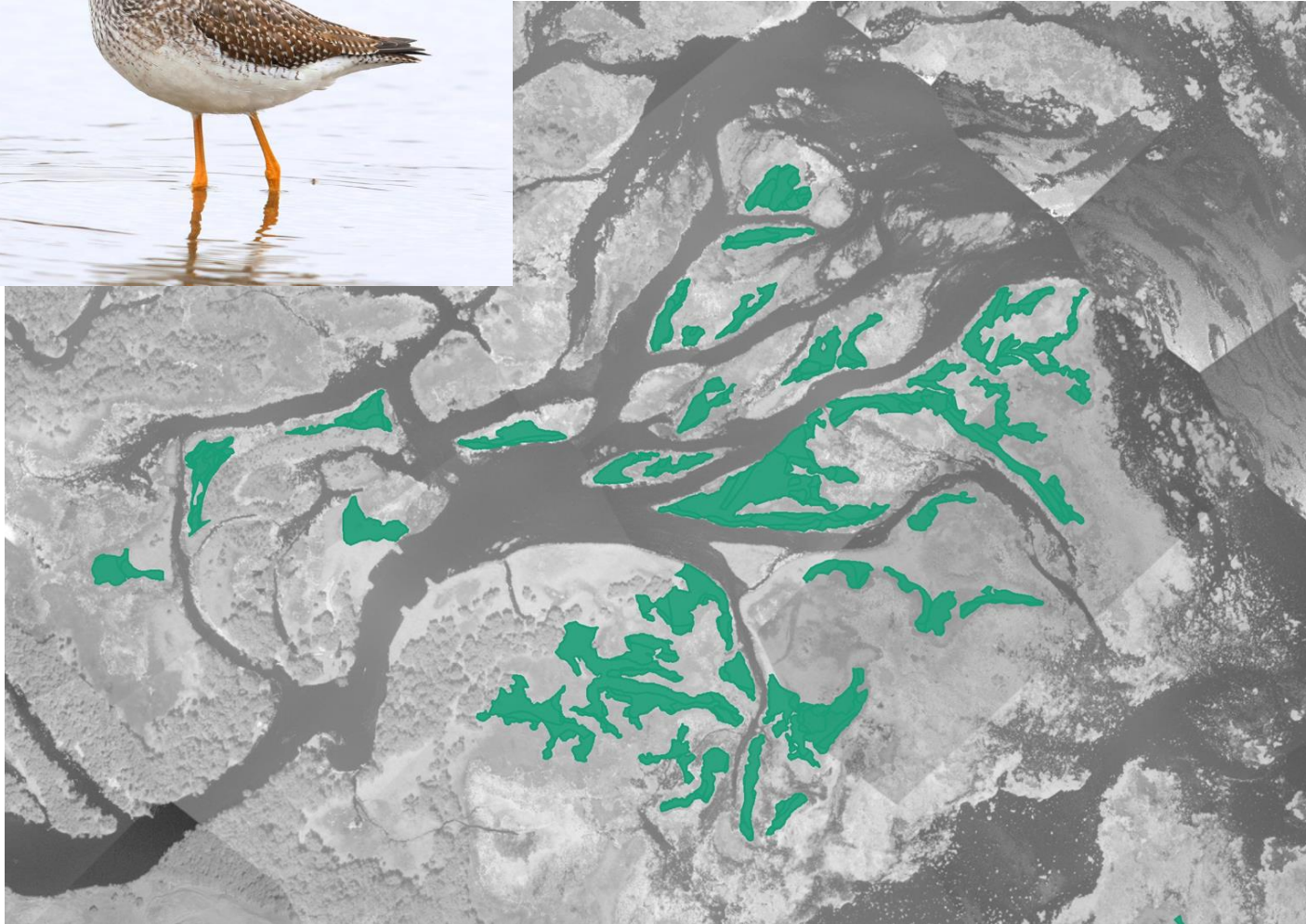
Navigation and Ecosystem Sustainability Program

- Appropriations
- Supporting partnership
- Communications
- Integrated management



- Learn to do better
- Integrate resources
- Collaborate





- Sediment is changing depth and shape of river
- Reducing fish habitat in backwaters
- Improving bird habitat on banks
- Affecting amount, quality, and configuration of aquatic and floodplain habitats
- Affecting reliability of navigation channel



- NOAA downscale climate modeling
- Surface water profiles and flow frequency
- Floodplain reconnection (Midwest CASC)
- USFWS nature-based solutions
- Gulf Hypoxia Program
- Low water cumulative impacts assessment
- Long term planning



Kirsten Wallace
kwallace@umrba.org